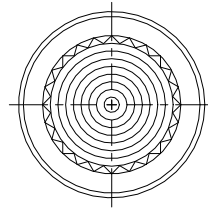




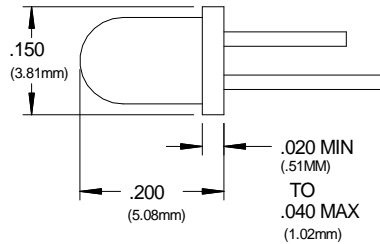
ACTUAL SIZE

APPROVAL

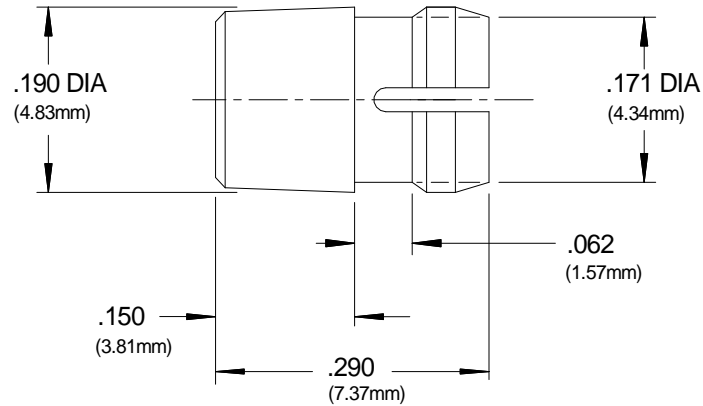
DATE



RECOMMENDED LED
SIZE T-1 (3MM)



LEDs with a major ID of .125" can be accommodated by reducing the panel mounting hole size.



ORDERING CODES

MODEL
 COLOR

RTP Red Transparent BTP Blue Transparent
 ATP Amber Transparent YTP Yellow Transparent
 GTP Green Transparent CTP Clear Transparent
 GLO White Translucent

NEW

U.S. & Foreign Pat. Issued & Pend.

NOTES:

MATERIAL: Polycarbonate
 GLO Series - Polycarbonate/Acrylic blend

DESIGN: High profile lens using Fresnel rings.

MOUNTING: Mounts through the front of panel.
 Mounting holes should be deburred but not chamfered.
 Hole size .171"±.002 (4.34mm) on 1/4" centers.
 Panel thickness 1/32" to 1/8"

For additional security use retaining ring
 RNG 165 for use with .125" dia. LEDs

TOLERANCES (EXCEPT AS NOTED)	REVISIONS			
	NO.	DESCRIPTION	DATE	BY
DECIMAL ±.010	1	Add GLO Series	1/6/09	JG
ANGLE ± 30'	2			
DIAMETER .003 TIR	3			
RADI .008 Max	4			
	5			

VCC P/N: CLIPLITE® SML 190

VCC VISUAL COMMUNICATIONS COMPANY, INC.
 190 Bosstick Blvd, Ste. 101 San Marcos, California 92069 U.S.A.
 Phone: (760) 560-1300; Fax: (760) 560-1301; e-mail: vccsales@vcclite.com

DRAWN BY	JMS	DATE	10/25/85	DRAWING NO.	REV.
CHK'D		SCALE	5 X	SML 190A	1